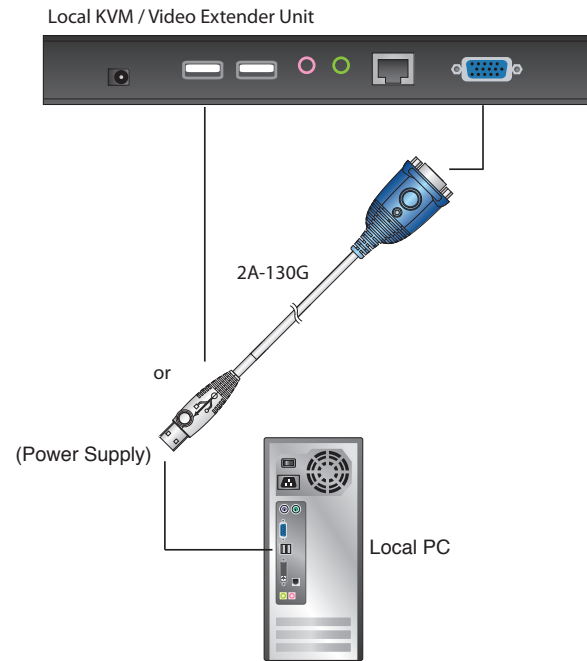


2A-130G

VGA EDID Emulator

- The 2A-130G VGA EDID Emulator is designed for ATEN KVM extender or video extender installations that do not utilize a local monitor at the site where the computer/video source is located. The 2A-130G emulates and stores a default ATEN EDID (Extended Display Identification Information) setting in a non-volatile memory. This means the computer/video source can still “see” the display, even though it is not directly connected.

The 2A-130G is suitable for any ATEN KVM or video extender installation where a monitor is not required at the local site, providing a simple, cost-saving, and convenient solution for display-related boot-up problems.



Features

- Substitutes as a monitor at the site where the computer/video source is located
- EDID built-in – Stores ATEN standard EDID information in device
- ATEN standard EDID supports all popular resolutions
- Superior video quality - up to 1920 x 1200@60Hz, 1366 x 768@60Hz
- USB Powered – No need for an external power adapter
- No software required – Eliminates incompatibility and installation issues; no need to configure
- Compatible Extenders: CE700A, CE750, CE770, CE800B, CE300, CE350, CE370, CE250A, CE252, VE150, VE170, VE200, VE300T, VE500T, VS1204T, VS1208T, VS1504T, VS1508T
- Compatible Splitters (Connect to Port 1): VS132A/134A/138A, VS92A/94A/98A, VS82/84/88, VS0116, VS132, VS102

Specification

Function		2A-130G
Connectors	Video	1 x HDB-15 Male (Blue)
	Power	1 x USB Type A Male
LEDs	Power	1 (Green)
Video		1920 x 1200@60Hz
		1366 x 768@60Hz
Cable Length		0.35 m
Power Consumption		DC5V, 0.06W
Environment	Operating Temp.	0–50°C
	Storage Temp.	-20–60°C
	Humidity	0–80% RH, Non-condensing
Physical Properties	Housing	Plastic
	Weight	42g
Dimensions (L x W x H)		6.59 x 3.40 x 1.60 cm

* Product specifications and appearance are subject to change without notice.

